



Safety Products Catalog

Discover our range of Reflective Solutions



 **Reflexite®**
REFLECTIVE SOLUTIONS

www.reflexite.com

A large semi-trailer truck is shown at night, illuminated by its own lights and the ambient light from the sky. The truck's trailer is covered in reflective safety markings, which are visible as bright, horizontal lines. The truck is positioned on a dark road, and the background is a dark, cloudy sky. The word "CONSPICUITY" is overlaid in white text on a dark blue rectangular background in the upper left corner of the image.

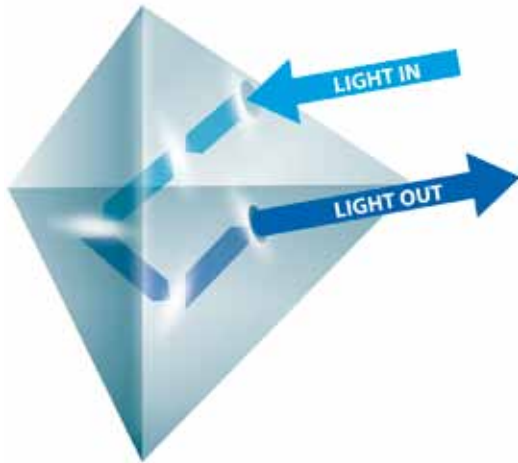
CONSPICUITY

Don't get caught in the dark

All over the world, fleet, emergency safety, fire, marine, automotive, traffic control, recreational, rail and agricultural industries depend on **Reflexite's®** proprietary retroreflective technology every day – to enhance visibility and ensure safety.

Founded in 1970 and headquartered in Avon, Connecticut. Reflexite is a pioneer and world leader in microprismatic technology. We are dedicated to innovations in conspicuity with one goal in mind: SAVING LIVES.

Reflexite® MICROPRISMATIC TECHNOLOGY



How it works:

Light strikes each of the three surfaces of the microprism before returning to the source. The microprism provides more reflective surface area than a glass bead and will reflect up to 250% more light.

The microprism's economical use of surface area delivers a higher level of performance in all applications, which results in superior long distance visibility of the vehicle and greater awareness by the motoring public.

Day or Night, Weather or Not

Reflexite's® bright ideas ensure visibility and safety for everyone, everywhere.

Reflexite delivers reflective solutions worldwide that help save lives.

Features & Benefits of Reflexite® Conspicuity Material

- Highest Nighttime Reflectivity in the Industry
- Can be Riveted Through
- No Edge Sealing Required
- Microprismatic Technology Provides Increased Sight Detection Distance
- Superior Durability – Withstands High-Pressure Washing and Resists Edge Lift
- Continues to Reflect Even After Impact
- Single Layer Construction – Thin and Flexible for Easy Application
- Comprehensive Warranty

IMPORTANT: Application technique is very important to the success of the material. Proper climate, tools and temperature will extend the life of the product.

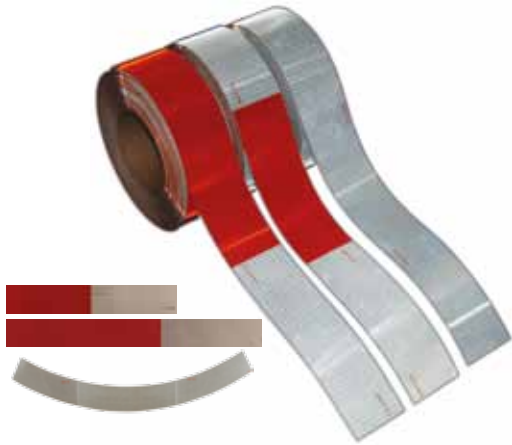


VISIBILITY

Reflexite's® tough, durable conspicuity tape ensures you meet conspicuity standards and improves the safety of fleet operators and fellow drivers.

Warning: Federal law requires all new trailers over 80" wide and over 10,000 lb. gross vehicle weight to be fitted with conspicuity treatments. NHTSA studies have shown that improving visibility can dramatically reduce rear-end and under-ride collisions. Failure to comply significantly reduces vehicle safety and can result in fines and other losses. For detailed specifications, please refer to the illustrations on page 17 of this brochure.

Reflexite® V82 OEM GRADE, DOT-C2



Discover the benefits:

- Exceeds minimum requirements by 200%
- Microprismatic technology ensures the longest sight detection distance
- Single-layer construction is thin and flexible for easy application with 100% adhesion
- Superior durability withstands high-pressure washing and resists edge lift
- Maximum nighttime performance
- Impact resistant – keeps photometric requirements after impact
– maintains safety after collision or years of wear
- OEM preferred – can be riveted; no edge sealing required
- No cracking – tough construction

New Product Code	Description	Specifications	Warranty
18686 (V82-5549-020150)	11" Red/ 7" White	2" x 150' Roll	10 Year
18692 (V82-5649-020150)	6" Red/ 6" White	2" x 150' Roll	10 Year
18676 (V82-5449-020150)	DOT White	2" x 150' Roll	10 Year
18352 (E02-5549-006EA)	11" Red/ 7" White	2" x 18" Strip	10 Year
18359 (E02-5649-001EA)	6" Red/ 6" White	2" x 12" Strip	10 Year
18347 (E02-5449-001EA)	DOT White	2" x 12" Strip	10 Year
18349 (E02-5449-037EA)	DOT White Crescent	2" x 24" Strip	10 Year

Reflexite® V92 DAYBRIGHT®, DOT-C2



Discover the benefits:

- White lines in pattern for maximum daytime visibility
- Microprismatic technology ensures the longest sight detection distance
- Single-layer construction is thin and flexible for easy application with 100% adhesion
- Superior durability withstands high-pressure washing and resists edge lift
- Maximum nighttime performance
- Impact resistant – keeps photometric requirements after impact
– maintains safety after collision or years of wear
- OEM preferred – can be riveted; no edge sealing required
- No cracking – tough construction

New Product Code	Description	Specifications	Warranty
18806 (V92-5549-020150)	11" Red/ 7" White	2" x 150' Roll	5 Year
18816 (V92-5649-020150)	6" Red/ 6" White	2" x 150' Roll	5 Year
18796 (V92-5449-020150)	DOT White	2" x 150' Roll	5 Year
18382 (E04-5549-006EA)	11" Red/ 7" White	2" x 18" Strip	5 Year
18385 (E04-5649-001EA)	6" Red/ 6" White	2" x 12" Strip	5 Year
18379 (E04-5449-001EA)	DOT White	2" x 12" Strip	5 Year



SAFETY

Reflexite® V42 RETRO-FIT GRADE, DOT-C2



Discover the benefits:

- Cost-effective solution for retrofitting existing trucks and trailers
- Thin and flexible for easy application with 100% adhesion
- Superior durability withstands high-pressure washing and resists edge lift
- Microprismatic technology ensures the longest sight detection distance

New Product Code	Description	Specifications	Warranty
19160 (V42-5547-020150)	11" Red/ 7" White	2" x 150' Roll	3 Year

Warning: Federal law requires all new trailers over 80" wide and over 10,000 lb. gross vehicle weight to be fitted with conspicuity treatments. NHTSA studies have shown that improving visibility can dramatically reduce rear-end and under-ride collisions. Failure to comply significantly reduces vehicle safety and can result in fines and other losses. For detailed specifications, please refer to the illustrations on page 17 of this brochure.

Reflexite® V52 DIAMOND PLATE, DOT-C2



Discover the benefits:

- Distinctive rugged diamond plate design complements your truck and trailer components
- Thin and flexible for easy application with 100% adhesion
- Superior durability withstands high-pressure washing and resists edge lift
- Microprismatic technology ensures the longest sight detection distance
- Reflective even after impact – maintains safety after collision or years of wear
- OEM preferred – can be riveted; no edge sealing required

New Product Code	Description	Specifications	Warranty
18626 (V52-5549-020150)	11" Red/ 7" White	2" x 150' Roll	5 Year
18629 (V52-5649-020150)	6" Red/ 6" White	2" x 150' Roll	5 Year
18622 (V52-5449-020150)	DOT White	2" x 150' Roll	5 Year
18397 (E52-5549-006EA)	11" Red/ 7" White	2" x 18" Strip	5 Year
18398 (E52-5649-001EA)	6" Red/ 6" White	2" x 12" Strip	5 Year
18396 (E52-5449-001EA)	DOT White	2" x 12" Strip	5 Year

Reflexite® CUSTOM LOGO, DOT-C2



Discover the benefits:

- Your custom logo enhances brand image while maintaining your safety – with the benefits of Reflexite's premium tape
- OEM preferred – can be riveted; no edge sealing required
- Microprismatic technology ensures the longest sight detection distance
- Single-layer construction is thin and flexible for easy application with 100% adhesion
- Superior durability withstands high-pressure washing and resists edge lift
- Maximum nighttime performance
- Impact resistant – keeps photometric requirements after impact – maintains safety after collision or years of wear
- 105 roll minimum requirement, call for order details

New Product Code	Description	Specifications	Warranty
L82	OEM GRADE	Logo Roll	10 Year
L92	DAYBRIGHT	Logo Roll	5 Year



Reflexite's® durable and distinctive conspicuity markings improve the safety of buses and their most precious passengers.

Reflexite® SCHOOL BUS SIGNS



Discover the benefits:

- Manufactured with Reflexite premium-quality V82 or V92 approved school bus yellow material for maximum performance
- Microprismatic technology ensures the longest sight detection distance
- Impact resistant – retains photometric performance after impact and maintains conspicuity after years of wear
- Many sizes available, call for details
- Easy to apply – thin and flexible with 100% adhesion.
- Superior durability withstands high-pressure washing and resists edge lift

New Product Code	Description	Specifications	Warranty
Call for quantity requirements & specifications	School Bus Sign	Sheet	5 or 10 Year

Warning: Federal law requires all school buses to be fitted with conspicuity treatments. Failure to comply significantly reduces vehicle safety and can result in fines and other owner losses. For detailed specifications, please refer to the illustrations on page 18 of this brochure.

Reflexite® SCHOOL BUS V82



Discover the benefits:

- Highest reflectivity available
- Easy to apply – thin and flexible with 100% adhesion
- Superior durability withstands high-pressure washing and resists edge lift
- OEM preferred – can be riveted; no edge sealing required
- For marking school bus exits, hatches, and perimeters
- Microprismatic technology ensures the longest sight detection distance
- Impact resistant – maintains photometric performance after impact
– maintains conspicuity after collision or years of wear

New Product Code	Description	Specifications	Warranty
18672 (V82-4441-020150)	School Bus Yellow	2" X 150' Roll	10 Year
18670 (V82-4441-010150)	School Bus Yellow	1" X 150' Roll	10 Year

Reflexite® SCHOOL BUS V92 DAYBRIGHT®



Discover the benefits:

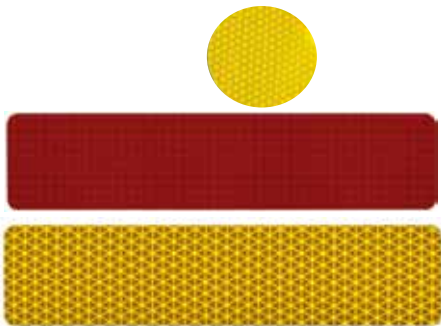
- Enhanced daytime color
- Exceeds all minimum requirements for school bus conspicuity
- Impact resistant – maintains photometric performance after impact
– maintains conspicuity after collision or years of wear
- Economical choice for retrofit applications
- OEM preferred – can be riveted; no edge sealing required
- For marking school bus exits, hatches, and perimeters
- Easy to apply – thin and flexible with 100% adhesion.
- Superior durability withstands high-pressure washing and resists edge lift
- Microprismatic technology ensures the longest sight detection distance

New Product Code	Description	Specifications	Warranty
18786 (V92-4441-020150)	School Bus Yellow	2" X 150' Roll	5 Year
18781 (V92-4441-010150)	School Bus Yellow	1" X 150' Roll	5 Year



Reflexite's® strong and durable conspicuity markings hold up in even the toughest rail and agricultural applications.

Reflexite® AGRICULTURAL STRIPS & CIRCLES



Discover the benefits:

- Unsurpassed nighttime visibility with Reflexite's microprismatic technology
- Pre-cut strips with radius or square corners – ideal for heavy equipment, farm machinery, agricultural and industrial vehicles
- OEM preferred – can be riveted; no edge sealing required
- Meets ANSI/ASAE S276.7 standards
- Impact resistant – retains photometric performance after impact – maintains safety after collision or years of wear
- Superior durability through power washing and extreme weather – resists edge lift

New Product Code	Description	Specifications	Warranty
18327 (E02-1249-081EA)	Red, Radius Corners, no seam line	2" x 9" Strip	10 Year
18366 (E02-6749-081EA)	Yellow, Radius Corners, no seam line	2" x 9" Strip	5 Year
18322 (E02-1249-054EA)	Red, Square Corners	2" x 9" Strip	10 Year
18342 (E02-1849-054EA)	Yellow, Square Corners	2" x 9" Strip	5 Year
18375 (E03-6772-010EA)	Yellow, Circle	3.12" Round	-

Warning: Federal law requires rail and agriculture vehicles to be fitted with conspicuity treatments. Failure to comply significantly reduces vehicle safety and can result in fines and other owner losses. For detailed specifications, please refer to the illustrations on page 19 of this brochure.



Reflexite® R99 RAIL CAR



Discover the benefits:

- Adheres easily to flat or curved surfaces
- Impact resistant – retains photometric performance after impact – maintains conspicuity after collision or years of wear
- Visible FRA 224 certification mark; colors conform to ASTM standards
- Superior durability through power washing and extreme weather – resists edge lift
- OEM preferred – can be riveted; no edge sealing required
- Kisscutting available

New Product Code	Description	Specifications	Warranty
18609 (R99-4441-040150)	Yellow	4" X 150' Roll	10 Year
18607 (R99-1541-040150)	White	4" X 150' Roll	10 Year
18454 (ER6-4441-018EA)	Yellow	4" x 18" Strip	10 Year
18455 (ER6-4441-036EA)	Yellow	4" x 36" Strip	10 Year

Warning: Federal law requires rail and agriculture vehicles to be fitted with conspicuity treatments. Failure to comply significantly reduces vehicle safety and can result in fines and other owner losses. For detailed specifications, please refer to the illustrations on page 19 of this brochure.

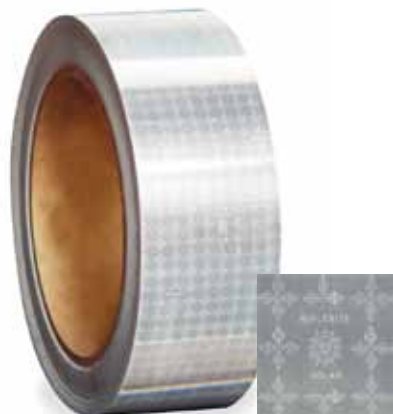


SAFETY

At sea, Reflexite cube corner prism material is visible at distances of over half of a mile. The U.S. Coast Guard has approved Reflexite material for use on its aids-to-navigation system of color-coded dayboards, buoys, and channel markers.

Reflexite® Marine M82 Material meets U.S. Coast Guard Specification G-Sec-393A for use on Maritime Aids to Navigation and is SOLAS (Saving of Lives at Sea) approved.

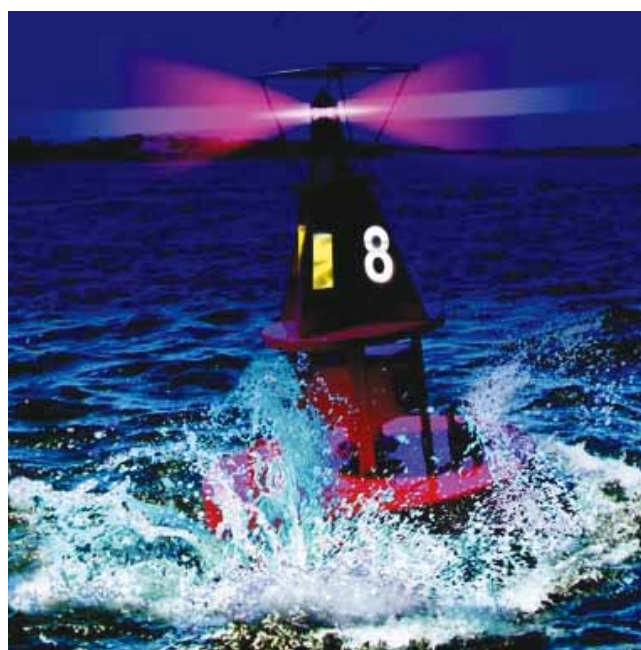
Reflexite® MARINE MATERIAL



Discover the benefits:

- Rigid and flexible applications
- FD1403 survives continuous immersion in seawater, sub-freezing temperatures and intense exposure to sunlight, guano and harsh weather
- Long-Distance Visibility
- High-brightness Reflexite material is visible at distances of more than half of a mile
- 8-mil thick, flexible, UV-stabilized, weather resistant polymeric film with prismatic retroreflective elements
- Weather resistant

New Product Code	Description	Specifications	Warranty
18578 (M82-1545-020150)	SOLAS material available in white only (rigid)-FD1403	2" X 150' Roll	-
18055 (851-1545-020150)	SOLAS material available in white only (flexible)-FD1404	2" X 150' Roll	-
D82	Call for details on ordering color rolls	-	-





EMS, Fire, and Police vehicles help keep people safe day and night. Reflexite's® strong and distinctive conspicuity markings improve their safety and ensure compliance with federal standards.

Reflexite® CHEVRON MARKING MATERIAL



Discover the benefits:

- Thin and flexible for easy application with 100% adhesion
- Superior durability withstands high pressure washing and resists edge lift
- Impact resistant – retains photometric performance after impact – maintains safety after collision or years of wear
- Microprismatic technology ensures the longest sight detection distance in the industry
- 6" x 150' rolls meets conspicuity requirements
- Distinctive design for EMS, Fire and Police vehicle applications
- Exceeds NFPA1901 requirements
- OEM preferred – can be riveted; no edge sealing required
- Other sizes available

New Product Code	Description	Specifications	Warranty
18715 (V92-1249-060150)	Solid Red Daybright	6" X 150' Roll	5 Year
18835 (V97-L264-060150)	Solid Fluorescent Lime	6" X 150' Roll	5 Year

Warning: Federal law requires most emergency vehicles to be fitted with conspicuity markings. Failure to comply significantly reduces vehicle safety and can result in fines and other owner losses. For detailed specifications, please refer to the illustrations on page 19 of this brochure.

Reflexite® HELMET PATCHES



Discover the benefits:

- Meets or exceeds NFPA 1971, 2007 edition
- Outstanding nighttime visibility through reflected color similar to that of its daytime appearance
- Superior reflectivity and durability
- Adhesive protected by a silicone coated paper release liner
- Features a glossy top surface, inherently resistant to soiling and allows for easy cleaning
- Superior daytime visibility through 100% fluorescence
- Supplied with an aggressive, acrylic based, pressure sensitive adhesive

New Product Code	Description	Specifications	Warranty
17724 (202-2053-001516)	Lime NFPA approved helmet strips - 16/sheet	1" X 4"	-
17720 (202-1553-001516)	White helmet strips - 16/sheet	1" X 4"	-
17681 (161-2053-001520)	Lime NFPA approved helmet trapezoid - 20/sheet	-	-
17678 (161-1553-001520)	White helmet trapezoid - 20/sheet	-	-

Reflexite® V82 & V92 DAYBRIGHT® COLORS



Discover the benefits:

- Extra solvent-resistant top coating ensures enhanced durability
- Vivid daytime colors and microprismatic performance combine to provide maximum overall visibility
- Impact resistant – retains photometric performance after impact – maintains safety after collision or years of wear
- Thin and flexible for easy application with 100% adhesion
- Superior durability withstands high-pressure washing and resists edge lift
- OEM preferred – can be riveted; no edge sealing required
- 1" shown – other sizes available

New Product Code	Description	Specifications	Warranty
V82	Red (12), Blue (23), White (15), Green (27), Orange (17), Yellow (18), Amber (19)	Call for availability	10 Year
V92	Red (12), Blue (23), White (15), Green (27), Gold (68), Orange (17), Yellow (18), FI Lime (L2), FI Orange (L4)	Call for availability	5 Year

See more of our additional products at www.reflexite.com

HIGH VISIBILITY WORKWEAR



ANSI Compliant retroreflective trim for use on vests, rainwear, and other garments for the:

- Roadway Construction Worker
- Utility Worker
- Survey Crew
- Railway Worker
- School Crossing Guard
- And much more

ROAD BUILDING/WORK ZONE SAFETY



Available products:

- Cone Collars
- Flexible Roll-Up Signs
- Post Band and Barrel Delineation
- Channelizing Devices
- Retroreflective Marking for Tubular Posts

FIRE SAFETY



Available products:

- High Temp Retroreflective Fire Trim
- FTP 1500 Series Fire Trim (shown below)

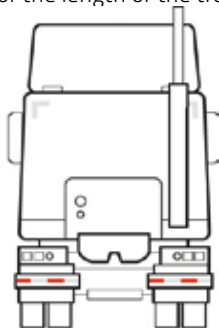


DOT-C2 REGULATION – FMVSS 108 (49CFR 571.108)

Conspicuity Tape is required on all new trailers manufactured after December 1, 1993. Alternating RED/WHITE tape on the side and rear of each trailer.

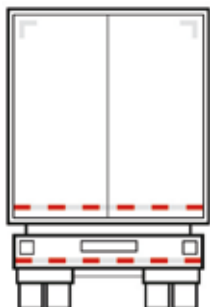
Overall application locations:

- 12" WHITE Strips in the upper rear corners
- 1.5" wide strip of RED/WHITE tape on the horizontal bar of the rear I.C.C. bumper
- 50% of the length of the trailer shall be treated with 2" wide strips or two (2) 1" strips applied no further than 1" apart



Cab application locations:

1. Rear Upper Body Markings – 2 pairs of 12" white strips on rear upper corners of cab facing rearward
2. Rear Marking – 2 sections of minimum 24" red/white strips facing rearward on fender, mud flap brackets or within 12" below the top of mud flaps



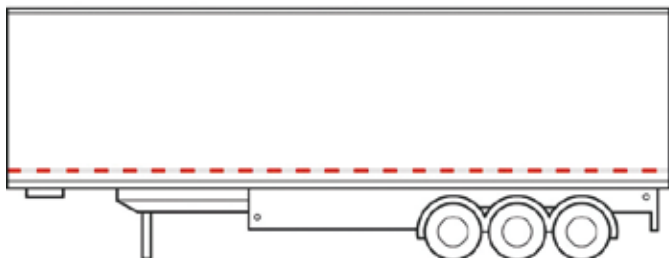
Trailer rear application locations:

1. Rear Upper Body Markings – 2 pairs of 12" white strips placed at the top of the trailer on the rear upper corners facing rearward
2. Rear Lower Body Marking – continuous red/white strips placed on the rear full width of the vehicle facing rearward
3. Bumper Bar Marking – continuous red/white strips placed on the rear bumper bars horizontal element full width facing rearward



Container rear application locations:

1. Rear Upper Body Markings – 2 pairs of white 12" strips on rear upper corners facing rearward
2. Rear Lower Body Marking – continuous red/white strips on full length of rear



Trailer side application locations:

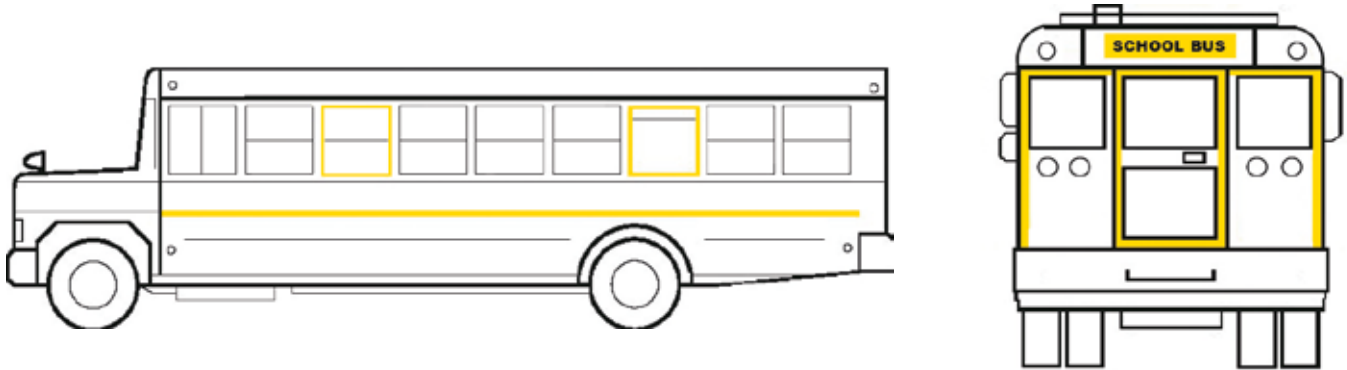
1. Side Marking – continuous red/white strips placed on each side facing sideward continuous or evenly spaced over minimum of 50% length starts and ends as close to the front and rear of the vehicle as practicable

IMPORTANT: Application technique is very important to the success of the material. Proper climate, tools and temperature will extend the life of the product.

SCHOOL BUS REGULATION – FMVSS 131, FMVSS 217

Each opening for a required emergency exit shall be outlined around its outside perimeter with a retroreflective tape with a minimum width of 1 inch and either red, white, or yellow in color, that when tested under the conditions specified in S6.1 of Standard No. 131 (49 CFR 571.131), meets the criteria specified.

NOTE: Meets and exceeds the National Standards for School Buses, Federal Specifications, ASTM D4956-94, Type V, FMVSS 131 & FMVSS 217.



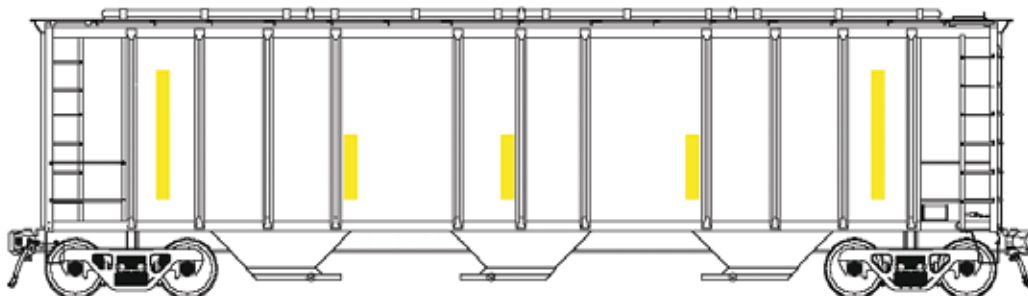
Application locations:

1. 1" strips used to mark side emergency exit windows
2. 1" strips used to mark back emergency exit windows

RAIL REGULATION – FRA 224

Retroreflective sheeting applied pursuant to this part shall be yellow, fluorescent yellow, or white as specified by the chromaticity coordinates of ASTM International's Standard D 4956-04, "Standard Specification for Retroreflective Sheeting for Traffic Control."

NOTE: According to the Federal Railroad Administration, regulation part FRA 224.101, 103, 105 & 106.

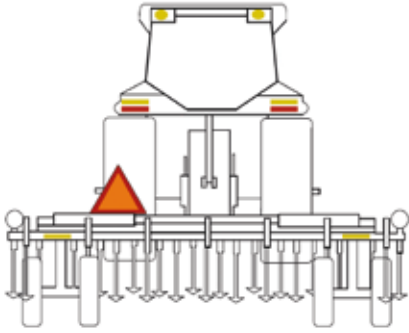


Application locations:

1. Retroreflective sheeting must be applied in strips 4" wide and 18" or 36" long
2. Material can be applied either vertically or horizontally on freight cars only

AGRICULTURAL REGULATION – ASAE S276.7, ASAE S279.15

Retroreflective sheeting shall meet requirements of ASTM D4956 for type V sheeting except for the photometric requirements. Retroreflective sheeting shall meet the minimum photometric performance requirements specified in the spec. ASAE S276.7 and ASAE S279.15.

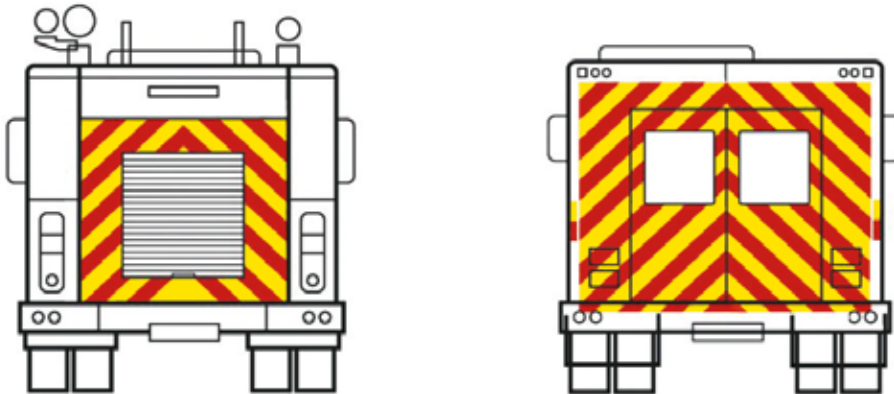


Application locations:

1. 2"x9" Red retroreflective strip
2. Red 2" retroreflective strips surround the perimeter of the SMV triangle

FIRE APPARATUS REGULATION – NFPA 1901

At least 50% of the rear vertical surfaces of the apparatus shall be equipped with a minimum of 6 inches alternating yellow and red chevron retroreflective striping sloping downward and away from the center line of the vehicle at an angle of 45 degrees.



Benefits of application:

1. Enhances the visibility of emergency response vehicles that work in or near moving traffic
2. Commands the attention of the motoring public more than horizontal stripes
3. The chevron pattern is an inverted "V", in compliance with the MUTCD (Manual On Uniform Traffic Control Devices)
4. More effectively warns oncoming motorists allowing more reaction time to maneuver

IMPORTANT: Application technique is very important to the success of the material. Proper climate, tools and temperature will extend the life of the product.

About Reflexite:

Because we are an employee-owned company, we hold a personal stake in our customers' satisfaction. Our employee-owners are proud to be the preferred suppliers of Reflexite's® innovative safety technologies worldwide.

We have offices in:

Australia · China · Canada · Denmark · France · Germany · Ireland · Italy · India · Japan · South Korea · Malaysia · South Africa · Taiwan · United States



Reflexite
Reflective Solutions Americas
120 Darling Drive
Avon, CT 06001
Toll Free Phone: 800-654-7570
Toll Free Fax: 800-895-0951
www.reflexiteamericas.com

Reflexite Canada
6790 Kitimat Road, Unit 18
Mississauga, Ontario, L5N 5L9 Canada
Phone: 905 821 3991
Fax: 905 821 8330

